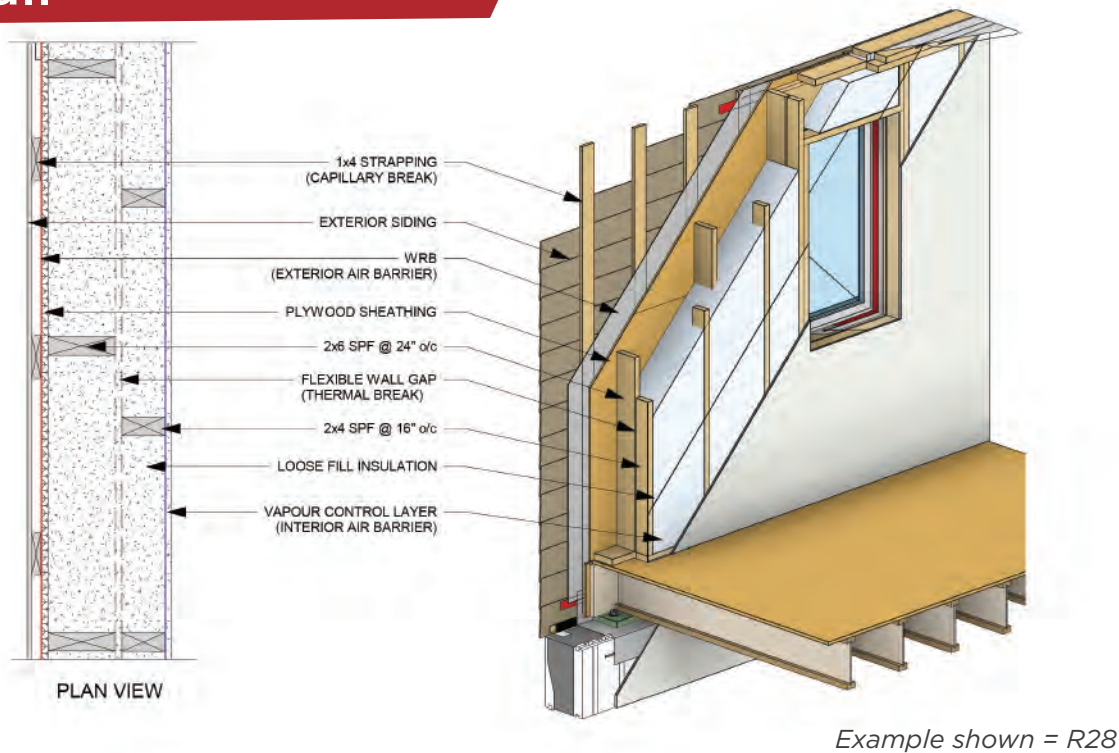


## WINTON PROLINE Flex-Wall



## Energy Efficient Solutions Made Easy

The WINTON PROLINE Flex-Wall is a practical solution when looking to meet different R-values since the distance between walls is flexible.

The basic strategy is simple and uses common materials and familiar assemblies. An exterior wall is built from two parallel stud walls. Both stud walls and the space between them are filled with dense pack insulation. The exterior is sheathed and finished conventionally. A rain-screen weather resistive barrier (WRB) detail is recommended.

- 1** Highest level of comfort significantly reducing heat and cold air transmission.
- 2** Flexible thermal value to achieve higher R-values in different climate zones.
- 3** Highest levels of acoustic/sound buffering.



Winton is your partner in building to a higher standard. As part of the professional team that evaluates for condensation in thick walls and selecting appropriate windows and doors, Winton can help you navigate each milestone. It's important to think of buildings and homes like a system, each piece of the puzzle contributes to the picture of the entire building. Even the form factor, or shape and footprint of the building can contribute to improved performance and energy conservation.

## Why Choose the WINTON PROLINE Flex-Wall

### Flexibility

The WINTON PROLINE Flex-Wall offers maximum comfort and flexibility to achieve higher R-values. Your home will use less energy and easily regulate the temperature throughout the home keeping it cool in the summer and warm in the winter.

### Thermal/Acoustic Break

Heat, cold and noise transmissions are dramatically reduced with a double wall configuration and thermal break. Combining the efforts of thermal efficiency and achieving airtightness you will enjoy a much quieter home.

### Precision Manufacturing

All of Winton's products are manufactured with exacting quality standards and premium lumber products in our environmentally controlled shops. This produces a quality product that stands the test of time.

### Panelized Construction

The Winton Flex-Wall is a quick construction solution when perusing energy efficient homebuilding options and can reach a weather-tight lock-up in days or a few short weeks (depending on the size of your home). Your project generates less waste, your investment is protected from the weather and contractors spend less time on site which reduces labour costs.

### Built with Wood

Wood is a natural, renewable, and sustainable material for building, with a lighter carbon footprint than steel or concrete. As a Sinclair Group Forest Products company, Winton is part of a responsible forestry management network where reforestation, harvesting, milling and environmental stewardship is at the centre of the products we use.